

1412 Coffey Drive - Perry



3 Bed, 2 Bath - Brick Home

Great View Out Back.

This nice brick home was built in 2005, and is located in a neighborhood of similarly built newer homes. The 1,261 sq. ft. home has central heat and A/C, large master-bath w/ walk-in closet, large open living

attached two car garage.



room, laundry room, and an

Directions

From 15th & Fir in Perry, go south on 15th to Coffey Dr. and turn east on Coffey Dr. The home is the 5th house on the south side of street.

Priced at \$108,900

More photos at www.choosewisely.info

MLS# 105526

Tony Wisely, CAI, BAS, GRI - Broker / Auctioneer

311 N 7th ST - PO BOX 30

PERRY OK 73077-0030

<http://www.choosewisely.info/>

tony@choosewisely.info

580-336-9090 (office)

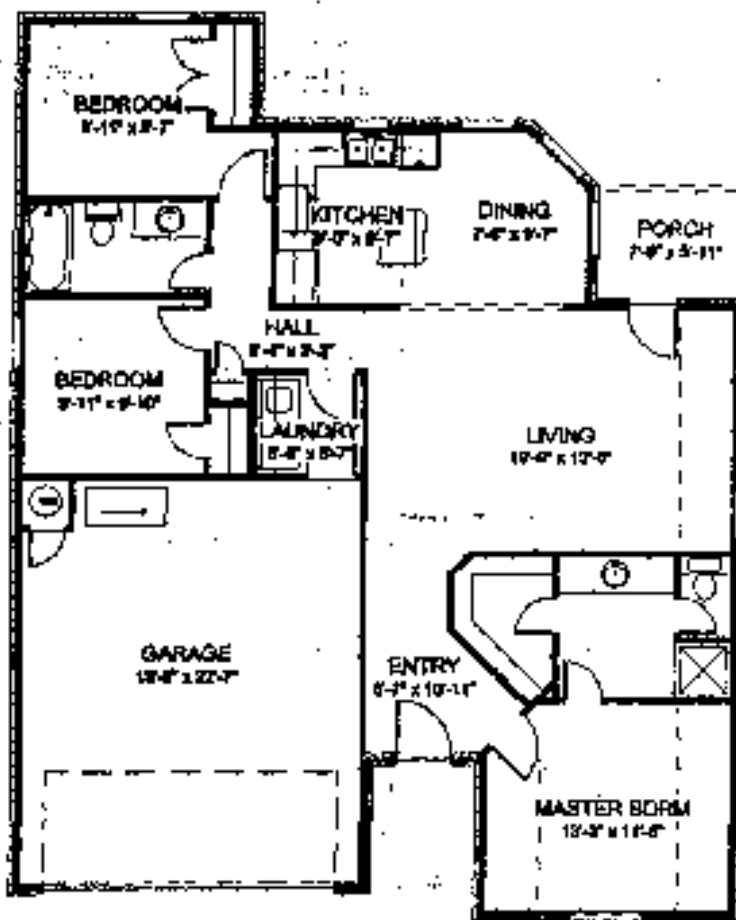
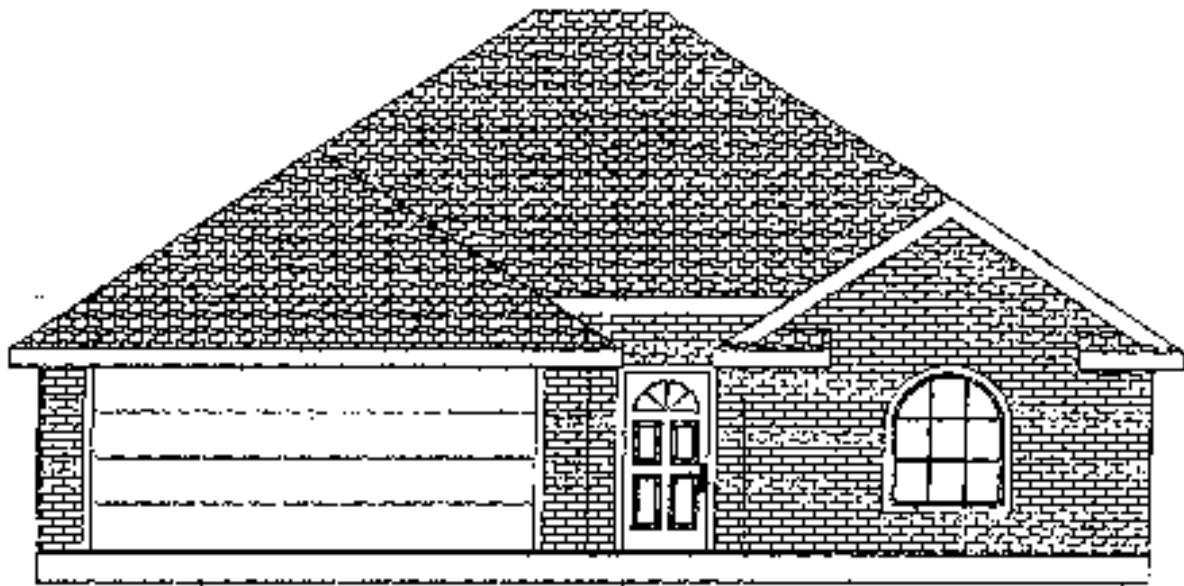
580-370-0711 (cell)

580-336-9091 (fax)



"When buying or selling, choose Wisely."





Build One Development, LP
Edmond, OK
405-340-5625

The Delaney
3 Bedroom, 2 Bath
1249 Square Feet